

COMMUNITY CONNECTIONS

ALTAR FLOWER SPONSORSHIP

Today's altar flowers are sponsored
IN HONOR & GLORY OF GOD

PRAYER LIST

Donna & Randy S., Grover F., George, Beverly, Debbie, Brian, Dean, Scheree, Rich, Sabrina, Bob E., Bob H., Ella S., the Schultz family, Madison, Jaxson, Carly, Michael, Luciana, Gene, Heather, Sue, Steve, Brian & Teresa, Mama Roz, Carolyn, Martha, Tom & family, Colin & family, Francesca, Baptiste, Jeff S. & family, Dolly, Debbie, Gail, Debra, Terry B., Joan, Kathy, Helen, Chrisie, Linda, Melissa, Jeff, Kirk family, Joan Merritt, Jim & Sarah, Jon, Kukon family, John, Sofia, Aimee, Lila, Sue, Nicole, the Dare family, Toby, Megan's Mother, Baby Isaiah, Smith Family, John, Darlene, Jeff, Nick Mengert, Audrey Serfass, Don Serfass, Dawn Kerr, Bob Cusano, Alice Kennedy, Dave, Bruce, Miss Juina, Mark Brooks, Tracey Kimmey, Liz Bennis, Wendy, Nathan J. Those in recovery, the homeless and the food insecure.

CHARGE CONFERENCE-SPECIAL SESSION

Tuesday, June 9th at 6:30 p.m.

Common Ground Room

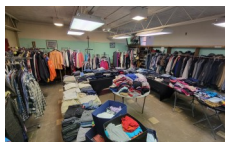
Purpose:

- Sale of old church school bus.
- Secure a loan from the Conference Loan Fund to renovate the parsonage.

Please, make every effort to attend this meeting .

COMFORT PILLOWS

Comfort pillows are now available in the Narthex for anyone who may need some support or cushioning while seated in our pews during service. We ask that you please return the pillows back to the Narthex after service.



THRIFT STORE DONATIONS NEEDED

Slightly used adult and children clothes
& shoes.



DONATIONS NEEDED

If you would like to help provide items to be distributed through the Blessing Box please see the list below.

Individually packaged oatmeal, granola bars, fruit bars, canned meat (with pull tabs), canned ravioli & pasta (with pull tabs), Pop tarts, small boxes of dry cereal, easy Mac, cup of soup and hotel toiletries. *Items can be left in the box marked "Blessing Box" in the Narthex.



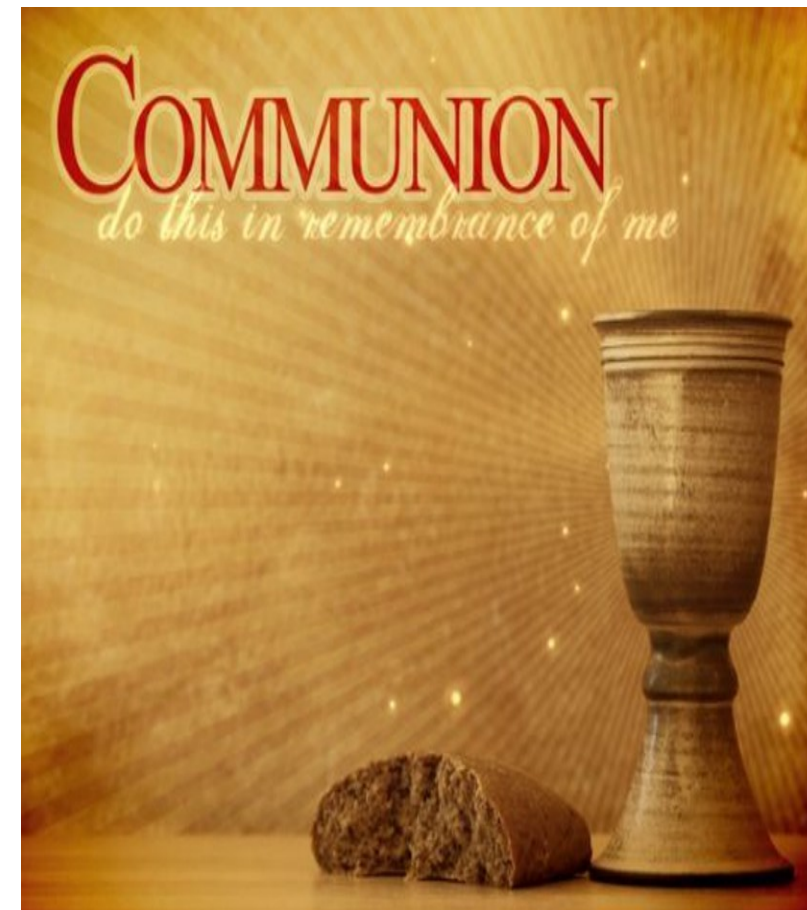
Sunday—Chaos Youth Group, 6:00-7:30 p.m.
Tuesday—Charge Conference Special Session, 6:30 p.m.
Scouts Troop, 7 p.m.
Wednesday—Prayer Team, 10:30 –11 a.m.
Thrift Store, 6-7 p.m.
Thursday—Girl Scout Troop, 6 p.m.
Saturday—Men's Prayer Breakfast, 8 a.m.
Thrift Store, 9 a.m.-10:30 a.m.

Office Hours

Tues. thru Thurs. 9 a.m. - 2 p.m.

EMILIE UNITED METHODIST CHURCH

CELEBRATING 162 YEARS OF WORSHIP,
PRAYER, & SERVICE
1863 - 2026



June 7th, 2026
10 a.m.



BRINGING PEOPLE TO CHRIST,
GROWING PEOPLE IN CHRIST,
SENDING PEOPLE FOR CHRIST.

ORDER OF WORSHIP
Second Sunday after Pentecost
Communion Sunday—June 7th, 2026
The Rev. Stacey Jones-Anderson

*You are invited to stand in body or spirit, as you are able.

Pre-Service Music *Here I am, Lord* arr. Jack Schrader
(Please take this time to write any prayer requests you may have on the prayer cards in the pews. They will be received during the offering and shared during prayers of the people).

Greeting The Lord be with you! **And also with you!**

***Call to Worship** Liturgist, Gary Tice
Liturgist: Lord, our God, you invite us to practice both justice and mercy.

People: Move us toward what can be.

Liturgist: "Justice at its best is power correcting everything that stands against love."

People: Move us toward what needs to be.

Liturgist: Lord, our God, you teach us that we embrace you as we embrace "the least of these."

People: Move us toward what must be.

All: We can move, Lord God. We can move, in word and deed, towards true respect and compassion, honoring the image of God in everyone. You call us to do this as we oppose and take action against systems and structures that break people. AMEN.

***Opening Hymn** *Hail to the Lord's Anointed* UMH #203

Unison Opening Prayer Gary Tice
Jesus, when do we see you in our day-to-day routines? Are you in the checkout line at the grocery store ahead of us, choosing which items you'll have to put back in order to make ends meet? Are you the one waiting on our table, barely making a living wage? Are you the one panhandling whom we have learned not to see? Are you the one we keep saying we'll visit tomorrow, tomorrow, tomorrow...? We praise you for calling our attention to the least, the lost, and the lonely. We praise you for being God-with-Them and God-with-Us. Help us to see you in each one we meet, until the walls of privilege and status are torn down forever and we serve each other in Beloved Community. Amen.

Passing of the Peace Gary Tice

Community Connections

Children's Message

Receiving God's Tithes and Prayers

Offertory Music *Faithfulness* by Joel Raney
Sanctuary Choir

***Doxology** *Praise God From Whom All Blessings Flow* #95

***Unison Offertory Dedication and Prayer** Gary Tice
Gracious and loving God, you tell us that when we care for those who are hungry, lonely or hurting, we are caring for you. As you bless us, help us to be a blessing to others. Receive these gifts, multiply them and use them to bring welcome and hope to our neighbors. May what we give today become love in action. Amen!

Hymn of Reflection *Pass It On* UMH #572

Prayers of the People & Lord's Prayer

Scripture Reading Matthew 25:35-40 Gary Tice

Sermonic *Here Am I* TFWS#2178

Sermon *Moving Toward Beloved Community*
Pastor Stacey

Communion Hymn *Let Us Break Bread Together* UMH #618

Communion Service II UMH page 12

***The Apostle's Creed** UMH page 881

***Closing Hymn** *We Are Called* TFWS #2172

***Mission Statement** (screen) Gary Tice

Leader: We are a community called to worship and glorify God by

**People: Bringing People to Christ,
Growing People in Christ,
And Serving People for Christ.**

Leader: This is our mission.

All: Thanks be to God!

***Benediction and Sending Forth**

***Postlude** *Toccata in G Major* H. Pachelbel

EMILIE UNITED METHODIST CHURCH

7300 New Falls Road, Levittown PA 19055

Phone: 215-945-5502

E-mail: office@emilieumc.com

Website: www.emilieumc.com



Ministers

The members and friends of Emilie UMC

Pastor

The Reverend Stacey Jones-Anderson

Minister of Visitation

Sally Basdeo (northminsterch@aol.com)

Director of Music

Hyosang Park

Director of the Handbell Choir

Cynthia Regan

Office Manager

Sally Basdeo (office@emilieumc.com)

Director of Emilie Christian Day School

Jennifer Thompson (dayschool@emilieumc.com)

Emilie Christian Day School

215-945-3131

dayschool@emilieumc.com

Emiliechristiandayschool.com

Pastor-On-Call: Please call 215-945-5503

The pastor-on-call is available outside of regular office hours for those experiencing true emergencies, such as a critical hospitalization or urgent physical, emotional or spiritual need.

To inquire about services that the church offers, such as joining the church, transferring membership, confirmation, baptism or any other questions or information, please call the church office during business hours.
